

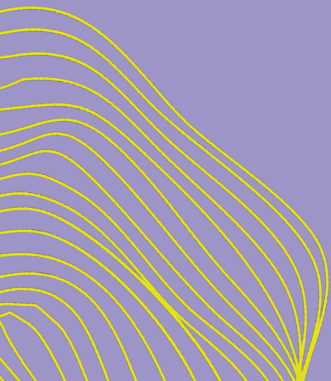
**EVEN
HERE**

**EVEN
NOW**

A MANIFESTO

**DECISION MAKERS MUST
ACKNOWLEDGE THE EXPERTISE
OF ISLAND-BASED ARTISTS,
UNDERSTANDING THAT GEOGRAPHICAL
LOCATION SHOULD NOT BE A BARRIER.**

**IN CHALLENGING TIMES, ARTISTS
REQUIRE SUPPORT, AND IT IS CRUCIAL
TO RECOGNISE THE IMPACT OF ISLAND
ARTS.**



FOR CHANGE

WITHOUT THIS ACKNOWLEDGMENT AND SUPPORT, COMMUNITIES ARE AT RISK OF LOSING THEIR CULTURAL RICHNESS.

OUR MANIFESTO SHOWS **HOW ISLAND BASED ARTISTS ARE CRITICAL TO OUR CULTURE, **WHY** IT IS ESSENTIAL THAT CREATIVE PRACTITIONERS HAVE SUPPORT AND **WHAT** NEEDS TO **CHANGE** AND BE PUT IN PLACE.**

This manifesto has been created by island artists who took part in Culture Collective, a network of 26 participatory arts projects, shaped by local communities alongside artists and creative organisations.

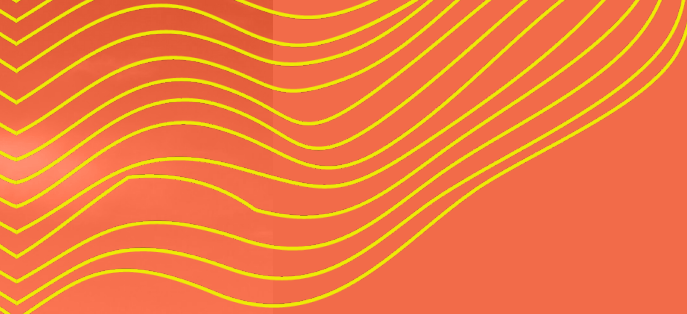
Artists:

Helen Robertson (Shetland)
Barry Nisbet (Shetland)
Sandra Kennedy (Western Isles)
Jamilla Garrett (Orkney)
Arwen Haselden (Orkney)
Niamh Haselden (Orkney)

Project Manager - Kathryn Spence, Shetland Arts with support from Carol Dunbar, Pier Arts Centre, in collaboration with An Lanntair and Taigh-Chearsabhagh.

Funded by Culture Collective through Creative Scotland.





01
EVEN US

02
EVEN HERE

03
EVEN THOUGH

04
EVEN BETTER


05
EVEN THERE

06
EVEN YOU



EVEN US

**ACKNOWLEDGE THE
EXTRAORDINARY WEALTH OF
CREATIVES, ARTISTS AND EXPERTS
WITHIN OUR ISLAND GROUPS.**



**WE ARE CREATIVE
PRACTITIONERS
ACROSS ALL
DISCIPLINES
WHO ARE BASED
ON SCOTTISH
ISLANDS.**

We **survive** and **thrive** through our work.

We **strive** for excellence in our practice.

We **promote** well-being in our communities.

We **enrich** the cultural landscape and add vibrancy.

We **integrate** within communities positively.

We **engage** with wider community groups.

We **reach** the folk that others can't.

We **enhance** Scotland's idea of itself as a forward-looking country.

We **connect** with issues that matter to people in a creative and non-discriminatory manner.

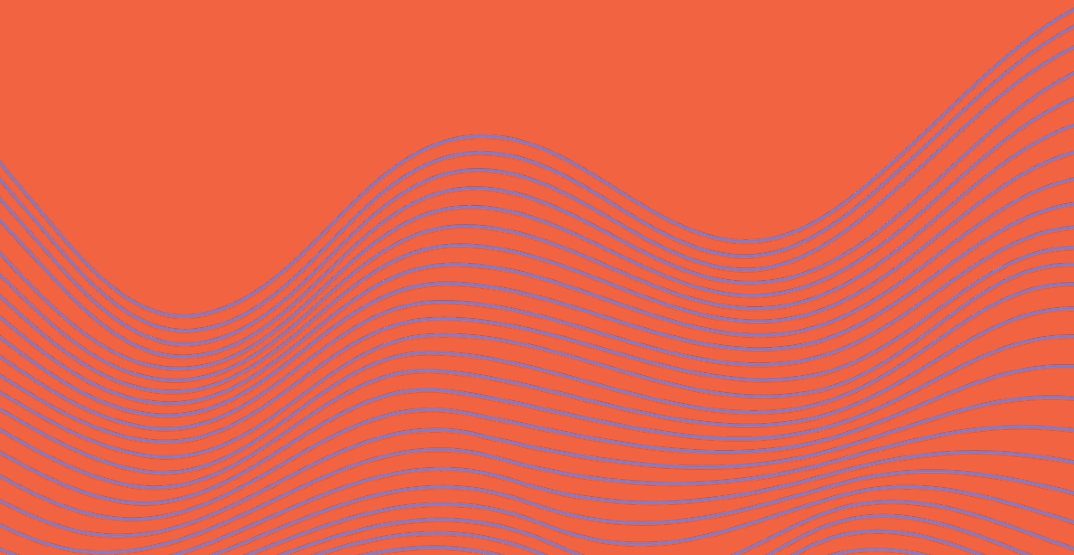
We **contribute** to social cohesion.

We **collaborate** in our work.

EVEN

HERE

**BE AWARE THAT WHILE OUR
LOCATION CAN HINDER DELIVERY
AND EXPOSURE OF OUR WORK IT
DOES NOT DIMINISH ITS QUALITY
AND RELEVANCE.**



The richness & wealth of creative talent within the island groups offers skills & heritage not found elsewhere.

There is a high quality of traditional & contemporary work produced & presented in the islands.

Through the arts, there is preservation & development of traditional skills specific to each island group.

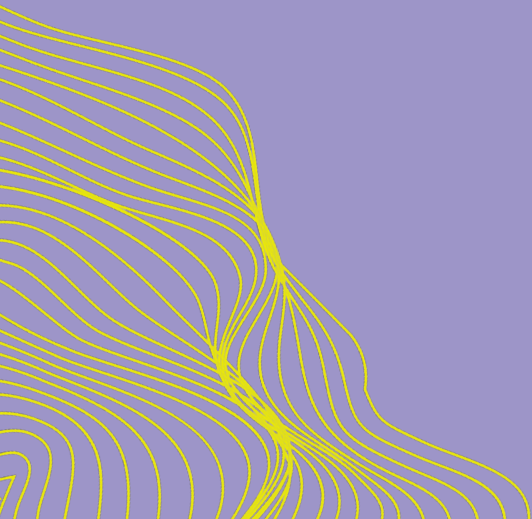
There is an island aesthetic reflected in the work of many island artists that is distinctive.

The island context provides a heightened & tangible awareness of the climate crisis.



EVEN THOUGH

**TIMES ARE HARD, WE NEED
MORE CREATIVITY TO SURVIVE
AS INDIVIDUALS AND AS
COMMUNITIES.**



Local public **transport is limited**, expensive & often affected by weather & aging vessels. Connections, even those within the island groups, are precarious & frequently cancelled.

Digital connectivity is often insufficient to mitigate challenges of distance.

Collaborators, networks & peers can often be & **feel far away**.

Connections to mainland Scotland are **expensive**, involving a lot of time including additional overnight stays.

The islands incur **higher energy costs** with a higher percentage of residents living in fuel poverty.

Distances are a barrier to opportunities & audiences.

Local expertise, knowledge & resources are frequently **enlisted without compensation**.

EVEN BETTER

**RECOGNISE THAT ISLAND ARTISTS
NEED SUPPORT TO WORK TO THEIR
POTENTIAL.**

Celebrate the artist's work in our islands, here & afar.

Ensure recompense for creative practitioners, their work, time & knowledge.

Increase investment in creative activity including within education & wellbeing.



Respect creativity and its contribution to the economy.

Ensure recognition, support & visibility for our work.

Nurture the next generation of creatives.

Appreciate the ability of creative practitioners to problem solve.

Increase potential & opportunity for creativity in our communities.

Utilise creative roles in defining place.

Increase awareness & understanding of people's access requirements.

Include those who may be isolated within a community.

Emphasise depth of qualitative change and less on quantity.





EVEN THERE

**HIGHLIGHT THE CONTRIBUTION
& VISIBILITY OF ISLAND ARTISTS
GLOBALLY.**

Collaborate to showcase what we can do beyond our shores.

Increase potential from here to there (physical & digital).

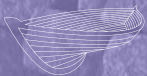
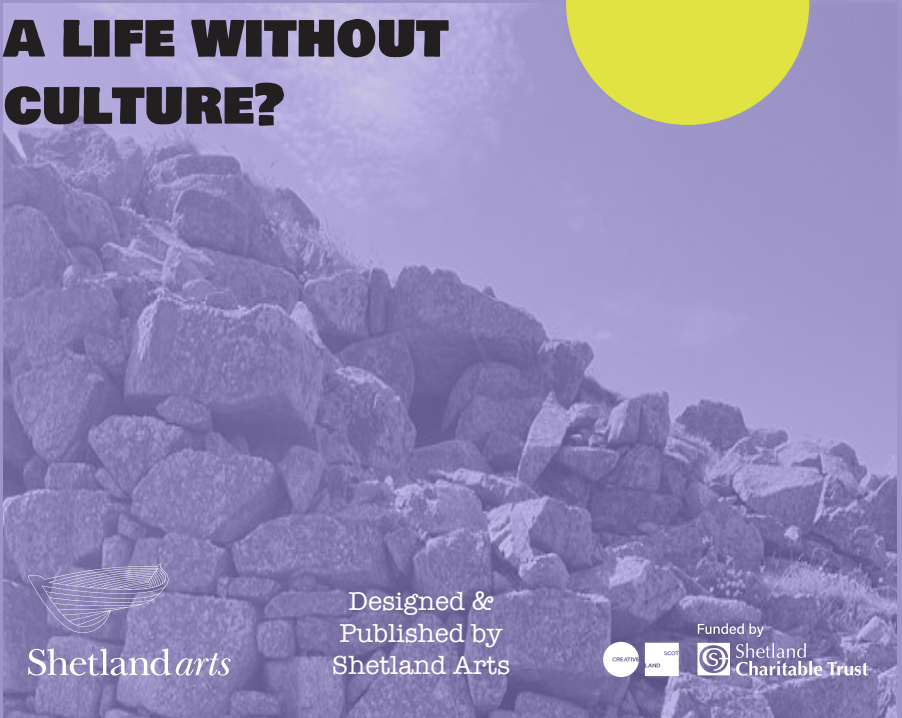
Share our heritage, traditions & practice with other places benefiting the artists in their development & careers while reflecting the riches of the islands' culture away from home.

Promote visibility of Scottish island artists.



EVEN YOU

**CAN YOU IMAGINE
A LIFE WITHOUT
CULTURE?**



Shetland *arts*

Designed &
Published by
Shetland Arts



Funded by

 Shetland
Charitable Trust